

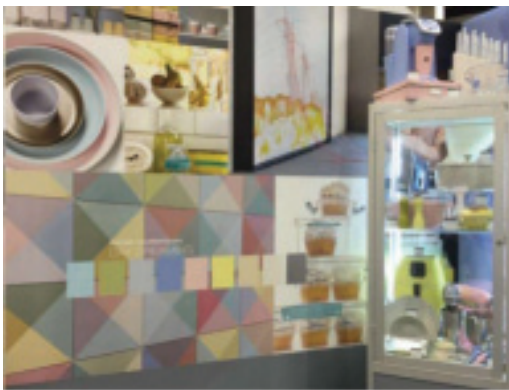
Pantone Palettes 2017 for Home + Interiors



Pantone Executive Director, Ms. Leatrice Eiseman shared the color institute's latest forecast for home interiors during her annual seminar at the International Home + Housewares Show. She unveiled the nine colour palettes for 2017 from Pantone View Home + Interiors.

Day Dreaming

This palette is a continuation of the Color of the Year



pastel theme, with colors that evoke thoughts that are light and weightless...in contrast to the

heaviness of day-to-day stresses. A key here is that other colors, such as Yellow Iris and a Nile green, are used to expand on the blue and pink.

Native Instincts

Style-wise, current and future forecasts point to a

homogenous mix of design and color where a piece of Native American pottery is compatible with a



Turkish kilim carpet and/or a pre-Columbian artifact. Likewise, this palette offers bold colors like a smoky orchid and a Carmine red along with softer Earth tones.

At Ease

A step from Day Dreaming, At Ease is grayed down for more of a sophisticated feel. A



variety of ever popular neutrals, both cool and warm, are blended with muted tones in a way that seems effortless.

Florabundant

Just like its name implies, Florabundant is filled with the sumptuous beauty of rich floral hues. This palette offers a lot of drama



from Pink Yarrow, Chrysanthemum, Red Dahlia and Baton Rouge and includes varying shades of green.

Acquired Taste

In both food and surroundings, an acquired taste means an appreciation for the distinctively different. Such is the case with this palette



which offers a mix of colors and/or textures not commonly seen together, yet they combine for a palette that is subtly luxurious. Colors include Orange Chiffon, Pale Gold, Mulberry, Brandied Melon, a dove gray and a muted pink.

Forest Bathing



This stress-reducing palette is inspired by the Japanese practice of

“Shinrin-yoku” or forest bathing. Studies have shown that a contemplative walk in the woods reconnects the individual with nature and elevates their mood. Several shades of green and blue-green are enlisted, which are contrasted by Grape Kiss and a refreshing Acid Lime.

Reminiscence

A different kind of walk – a walk down memory lane – is the mood conveyed here. Traditional shades like Maritime Blue, Sepia Tint and Rattan convey a sense of nostalgia and stability, but the mix of new colors like

murky Martini Olive and Bird’s Egg Green keep the palette feeling fresh.



Raw Materials

Both the re-use and re-purposing of materials from nature



and the health and wellness movement are represented in this palette. Zephyr Pink offers an unexpected

pop of color against the many, more natural tones.

Graphic Imprints

Described by Eiseman as “great fun,” this palette starts with



a base of black and white but then pulls in a series of strong, vibrant colors with names that tell a story themselves: Blazing Yellow, Dazzling Blue,

Prism Pink, Fandango Pink, Opaline Green and Orange Popsicle. ■